

Container Guide

General View

Note:

The given data are merely base data.

There might be differences depending on the carrier.

Standard Container

20' 40' 40' High-Cube Version



Suitable for any general cargo. Various lashing devices on the top and bottom longitudinal rails and cornerpost.

Hardtop Container

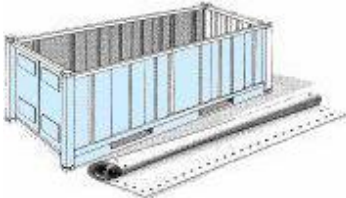
20' 40' 40' High-Cube Version



Equipped with a removable steelroof. Especially for heavy loads and overheight cargo. Loading through roof opening and doorway by swung out doorheader.

Open-Top Container

20' 40'



With removable tarpaulin. Especially for overheight cargo. Loading either from top side or door side by swung out doorheader.

Flat Rack

20' 40' 40' High-Cube Version



Especially for heavy loads and overwidth cargo.

Platform

20' 40'



Especially for heavy loads and oversized cargo. Non domestic shipments.

Ventilated Container

20'



Especially for cargo which needs ventilation.

Refrigerated Container

20' 40' 40' High-Cube Version



Reefer Container do have their own electrically operated cooling/heating unit. The power supply is provided by ship's electrical plant, by terminal or by "clip-on" diesel generator.

Insulated Container

20' 40'



These container do not have their own cooling facility. The cooling/heat is supplied by a onboard Conair plant, by terminal or by a "clip-on" reefer unit.

Tank Container

20'



For the transport of liquid food, e.g.:

- Alcohols
- Fruit juices
- Edible oils
- Food additives.